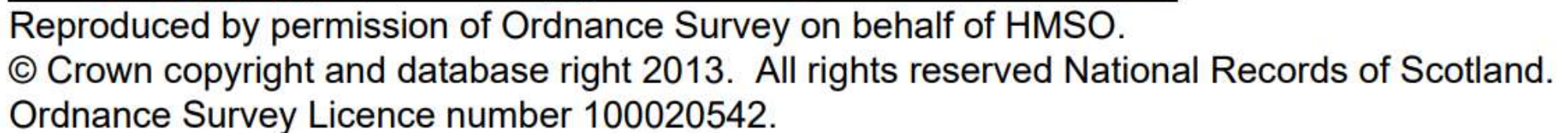


# Addressing people in Scotland: The value of geography for administrative data analysis

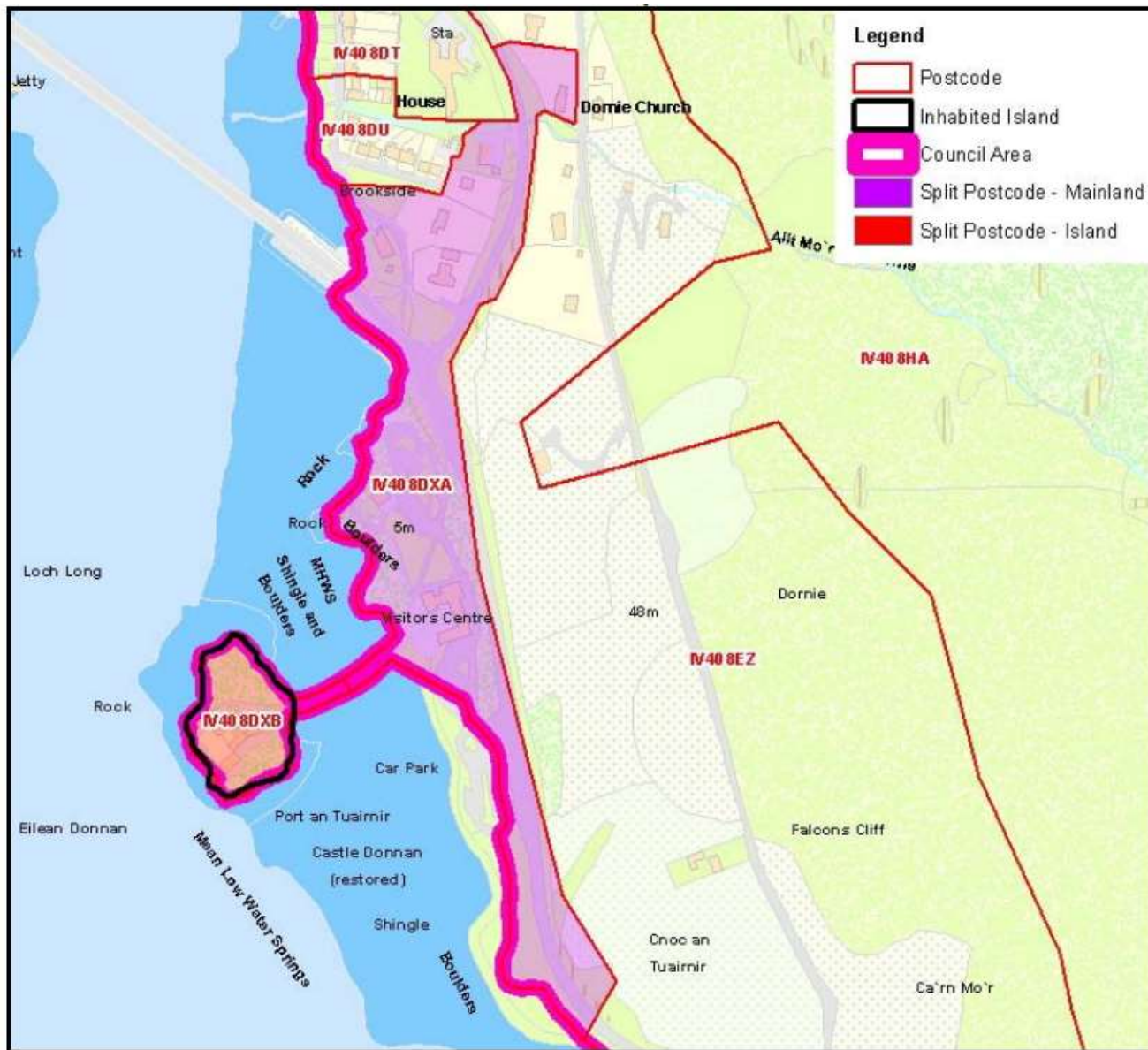


62b Colinton Rd, Edinburgh EH14 1AT

<b>Example</b>	<b>Geographic Unit</b>
EH	Postcode Area
EH12	Postcode District
EH12 7	Postcode Sector
EH12 7TB	Unit Postcode



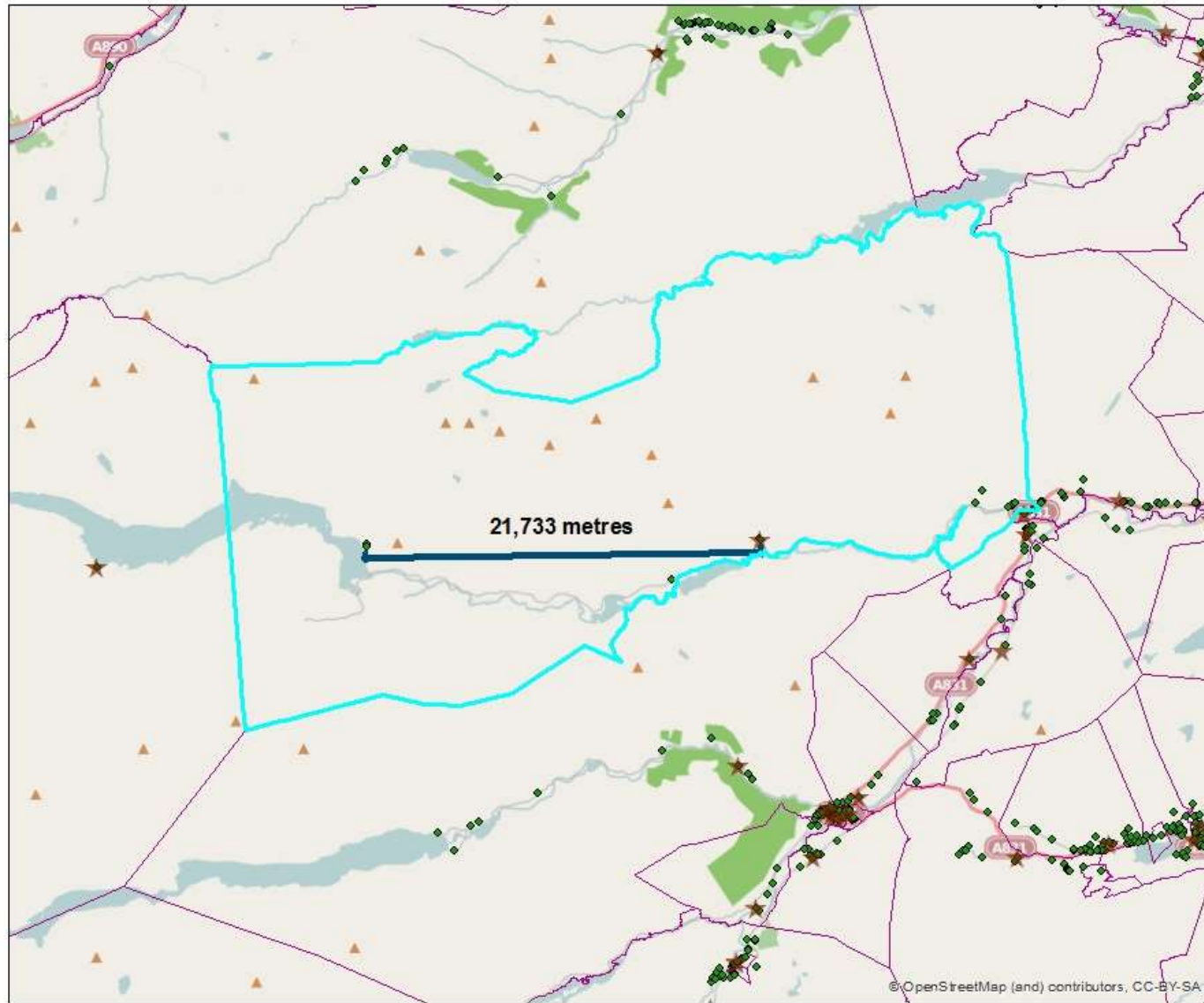




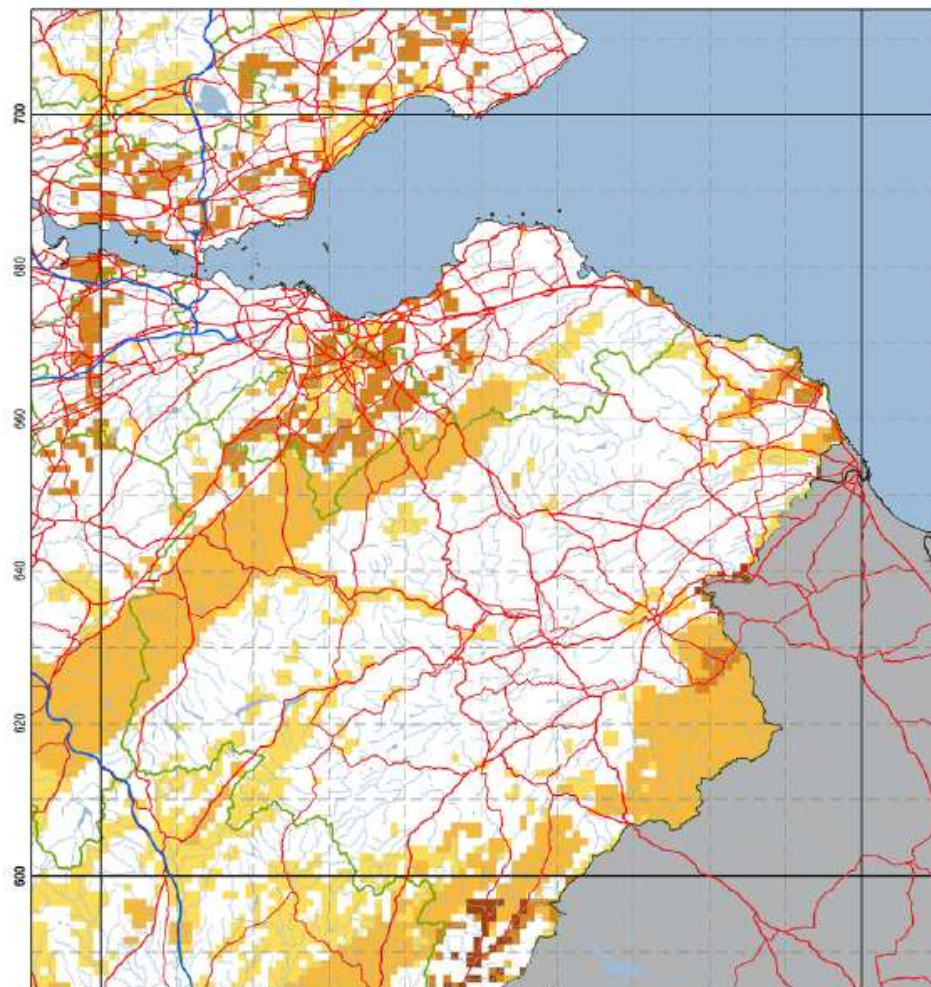
Reproduced by permission of Ordnance Survey on behalf of HMSO.

© Crown copyright and database right 2013. All rights reserved National Records of Scotland.

Ordnance Survey Licence number 100020542.







The colours show the maximum percentage band within each 1-km grid square of the national grid (see page 4). The best estimate for an individual property in a coloured square can be obtained for a small charge from [www.ukradon.org](http://www.ukradon.org). The white squares, the 0-1% band, contain no Affected Areas as defined by the HPA.



Map 5 Edinburgh and the south-eastern Scottish Borders, 100-km grid square NT (axis numbers are the coordinates of the National Grid)

© Crown copyright. All rights reserved [Health Protection Agency] [100016960] [2011]  
Radon potential classification © Health Protection Agency and British Geological Survey copyright [2011]



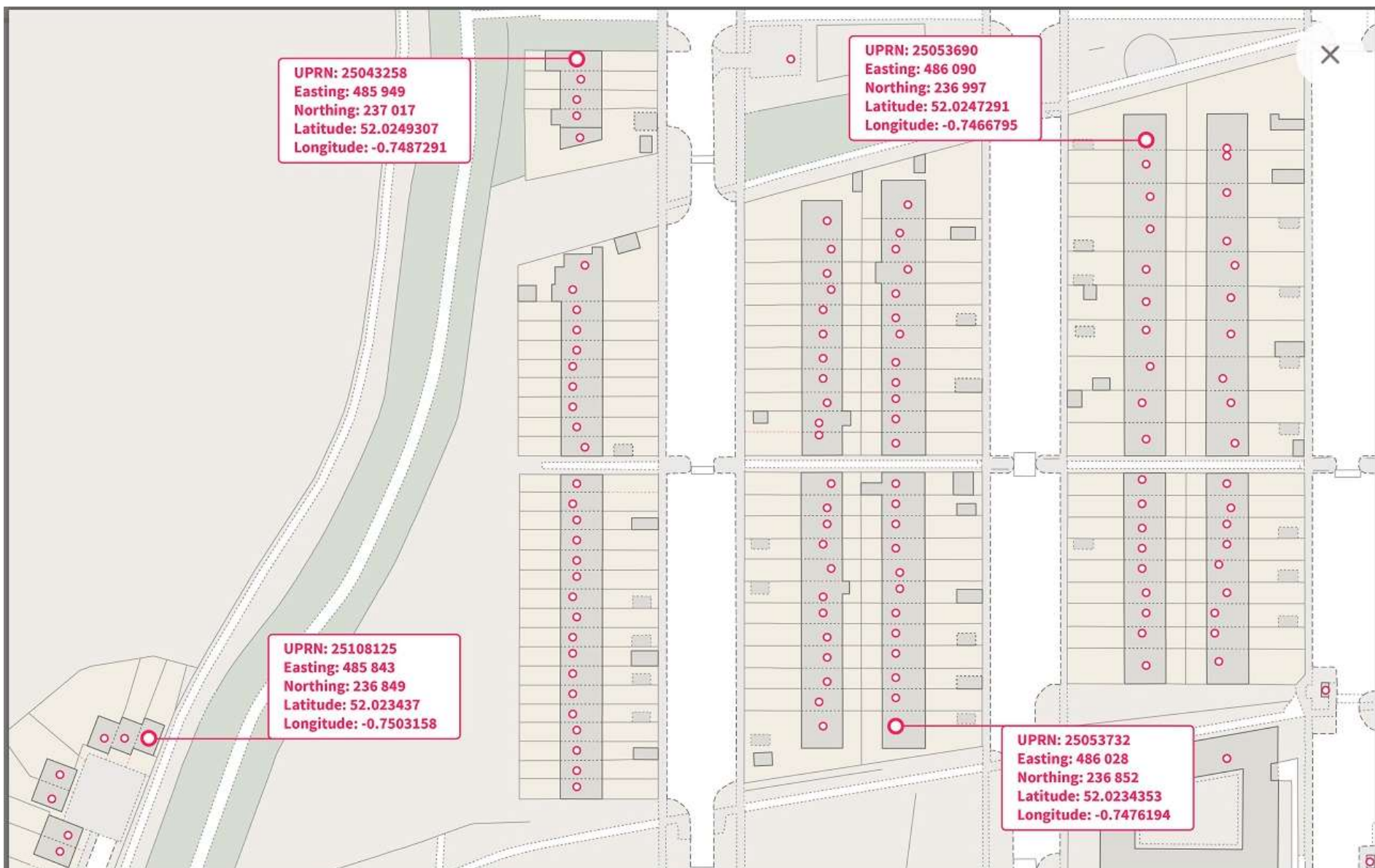
# Home at or above radon Action level

Unique Property Reference Number (UPRN) - nationally unique, persistent and otherwise well-behaved. Each local authority in England, Scotland and Wales allocates a 12-digit number known as the UPRN to each new “addressable object” at the earliest possible stage of its lifecycle

**A persistent identifier**









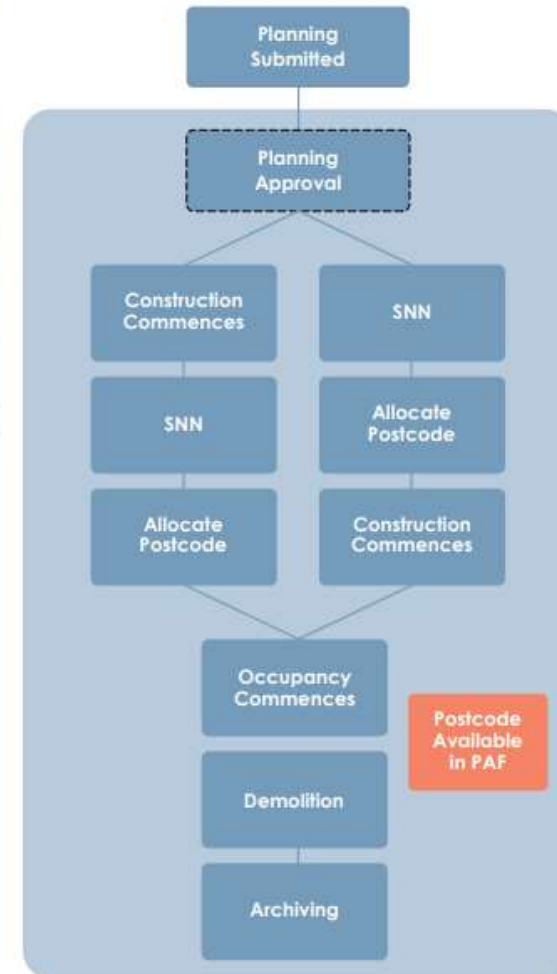
## National Address Gazetteer

Local authorities provide their address update records to GeoPlace on a continuous basis for inclusion in the National Address Gazetteer infrastructure. The National Address Gazetteer infrastructure contains over 40 million addresses. In every six weekly cycle GeoPlace synchronises 2,599,000 changes and carries out a total of 3,440 data validation checks.

The National Address Gazetteer infrastructure is the single source from which AddressBase products are developed and made available by Ordnance Survey. This information is also used by Ordnance Survey as their primary source of change intelligence for resurveying an area.

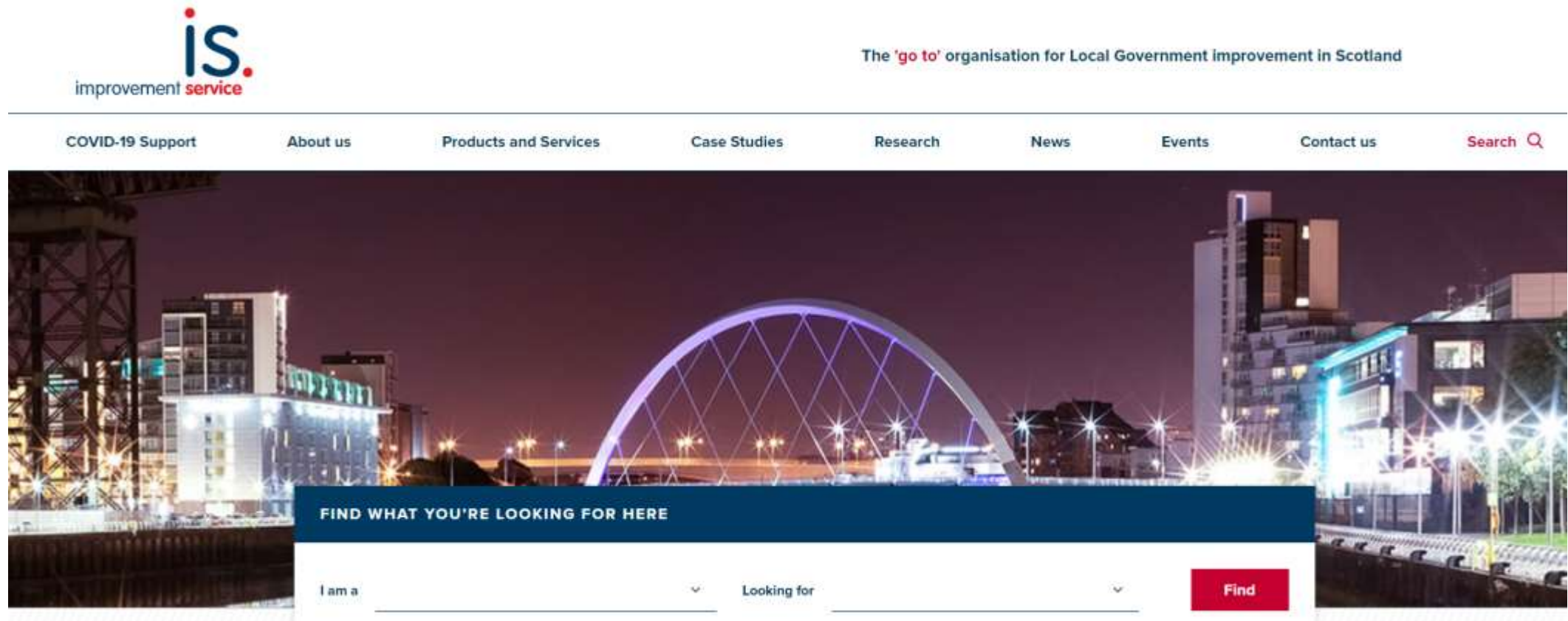
AddressBase® Premium, available from Ordnance Survey, is the most comprehensive and accurate geographic dataset of 40 million addresses, properties and land areas where services are provided.

Thanks to the relationship with local authorities, users of AddressBase benefit from the most in-depth view of addresses throughout the property lifecycle – from planning permission, through construction, occupation and change of use to demolition and beyond.



The diagram above is a representation of the lifecycle of an address as recorded by a local authority. As local authorities have the duty to approve planning and the statutory obligation for street naming and numbering, information about a property is recorded by the local authority before becoming available in other datasets such as the Postcode Address File (PAF). The blue box surrounding the lifecycle represents all of the stages where the address appears within AddressBase Premium.

# What did we do?





The **Community Health Index** is a register of all patients in NHS Scotland. CHI Index contains details of all Scottish residents and exists to ensure that patients can be correctly identified, and that relevant information pertaining to a patients health is available to providers of care.

# CHI-UPRN Residential Linkage (CURL)

<u>Seeding Results:</u>	<u>Address Rows</u>		<u>People</u>	
Excellent	2,378,655	74.1%	4595099	78.8%
Good	294,294	9.2%	482532	8.3%
Fair	89,096	2.8%	129758	2.2%
Multiple	5,406	0.2%	9129	0.2%
No Match	441,500	13.8%	612433	10.5%
Total	3,208,951	100.0%	5828951	100.0%
Total Seeded: Fair-Excellent	2,762,045	86.1%	5,207,389	89.3%
Not seeded: No match-Multiple	446,906	13.9%	621562	10.7%

Achieved a UPRN for about 90% of \*people\*

# How can the UPRN be used?

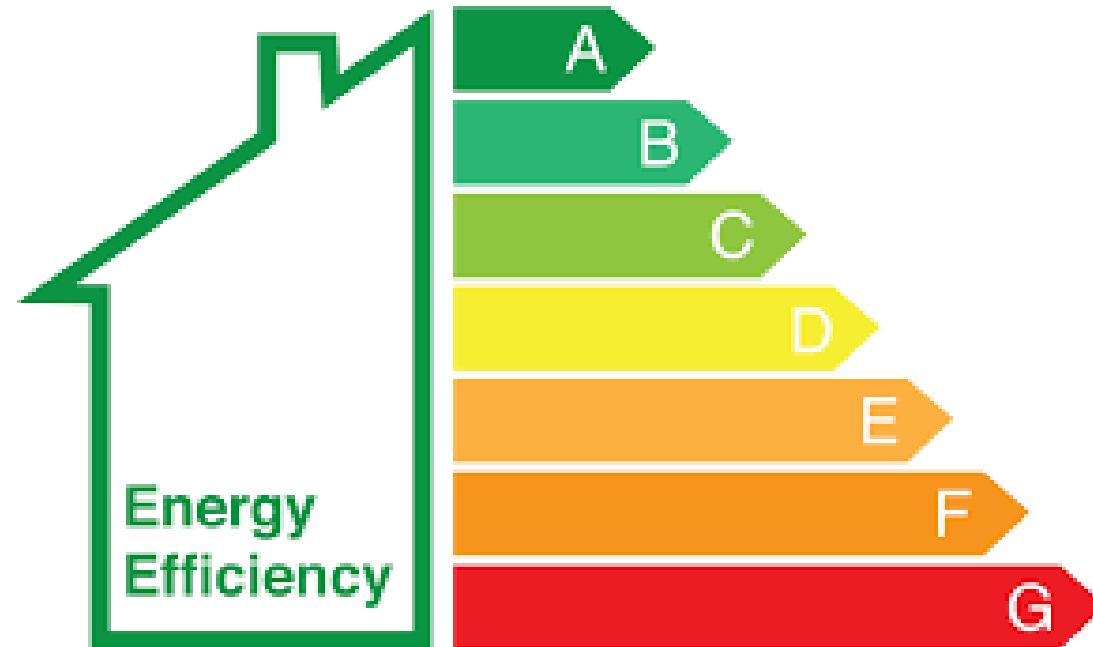
- Research use
- Direct care/ service purposes



## Council Tax Bands In Scotland

Council Tax Band	Range of Value
<b>A</b>	Up to £27,000
<b>B</b>	More than £27,000 up to £35,000
<b>C</b>	More than £35,000 up to £45,000
<b>D</b>	More than £45,000 up to £58,000
<b>E</b>	More than £58,000 up to £80,000
<b>F</b>	More than £80,000 up to £106,000
<b>G</b>	More than £106,000 up to £212,000
<b>H</b>	More than £212,000







**CORONAVIRUS**  
**STAY HOME**  
**PROTECT THE NHS**  
**SAVE LIVES**



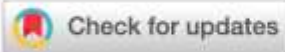


Understand who may  
be in a household

Informal Care

# Understand who may be in a household

## EDITORIALS



Department of Infectious Diseases and Infection Control, Skane University Hospital, Klostergatan 17, 22185, Lund, Sweden

Correspondence to: U Karlsson  
ulf.karlsson@med.lu.se

Cite this as: *BMJ* 2020;371:m3944

<http://dx.doi.org/10.1136/bmj.m3944>

Published:

## Covid-19: risks to healthcare workers and their families

### Mistakes made in the first wave must not be repeated in the second

Ulf Karlsson, Carl-Johan Fraenkel

Since the beginning of the coronavirus 2019 (covid-19) pandemic, healthcare workers have shown a remarkable resilience and professional dedication despite a fear of becoming infected and infecting others.<sup>1</sup> In a linked paper (doi:10.1136/bmj.m3582), Shah and colleagues now report robust and concerning findings regarding the risks of covid-19 among health workers and their households.<sup>2</sup>

In a large register based cohort study, comprising the entire Scottish healthcare workforce, the authors compared the risk of covid-19 related hospital admission between patient facing and non-patient facing workers, their household members, and the general population. Absolute risks were low, but during the first three months of the pandemic patient facing healthcare workers were three times more likely to be admitted with covid-19 than non-patient facing healthcare workers. Risk was doubled among household members of front facing workers, in analyses adjusted for sex, age, ethnicity, socioeconomic status, and comorbidity.

Previous work reported similar risks for covid-19

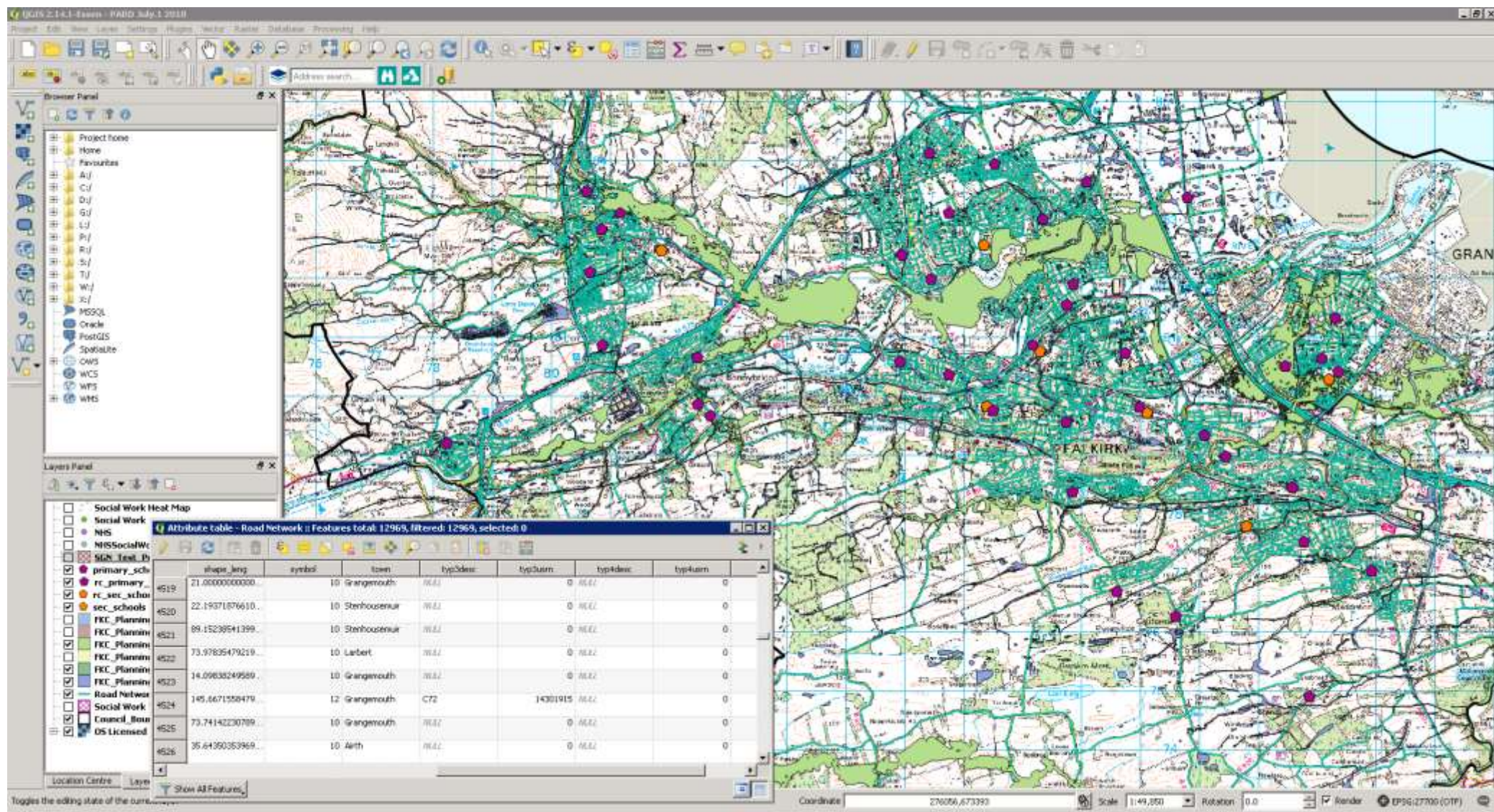
pandemic, which hampered early detection of emerging outbreaks and implementation of infection control measures. Increasing experience now suggests that every suspected healthcare associated infection should trigger a bundle of immediate infection control measures, including extensive screening for severe acute respiratory syndrome coronavirus 2 (SARS-CoV-2), quarantining of all patients on the affected ward, physical distancing between personnel, and use of reinforced PPE during all contact with patients on the affected ward, in order to prevent larger outbreaks.<sup>10-12</sup>

Most, but not all, studies report increased risks for health workers caring for patients with covid-19.<sup>3-13 14</sup> Working in intensive care units is not associated with an increased risk of infection, possibly owing to the protection afforded by high level PPE or to the decrease in infectivity that occurs in the later stages of the illness, even among critically ill patients.<sup>13 15</sup> The greatest risk to healthcare workers may be their own colleagues or patients in the early stages of unsuspected infections when viral loads are high.<sup>12</sup>

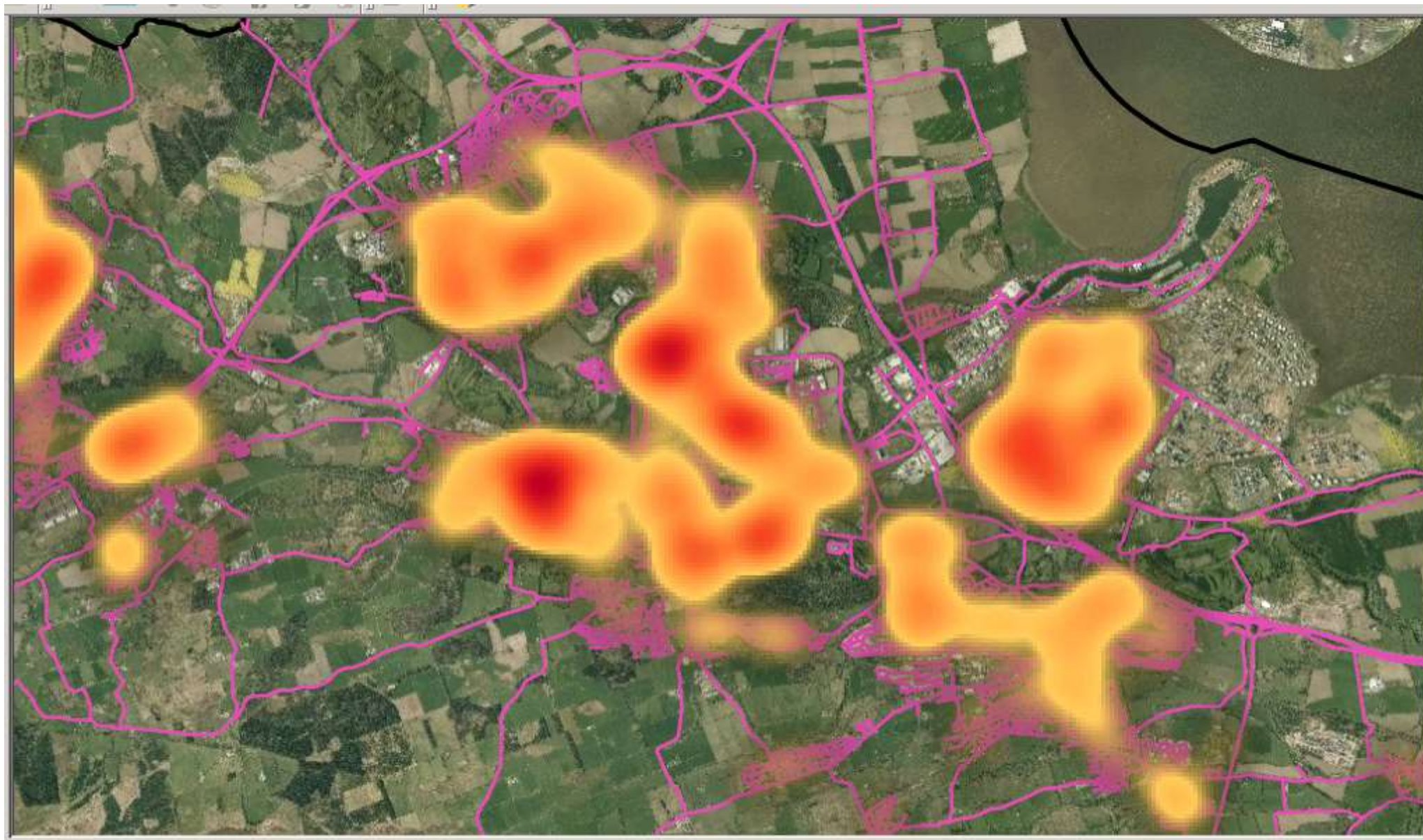
# Persons at Risk Database ([PARD](#))

- “On 1 December (2019), [Falkirk experienced a gas network failure](#) which led to thousands of people being left without heat in freezing temperatures. Ensuring vulnerable people received the support they needed was a priority, so having the Persons at Risk Database (PARD) in place was key. With PARD in place, gas infrastructure company SGN and Falkirk’s Health & Social Care Partnership were able to get to the homes of the vulnerable and elderly efficiently.” - Avais Ijaz, Falkirk Council









# Conclusion

- Beta product is now available
- Look to improve quality overtime
- Work with PHS team introducing a new CHI





**LONDON POSTAL DISTRICT MAP** Showing the position of each LONDON and SUBURBAN SORTING OFFICE with the Cart Routes and circulation through the EAST and WEST CENTRAL DISTRICTS.

